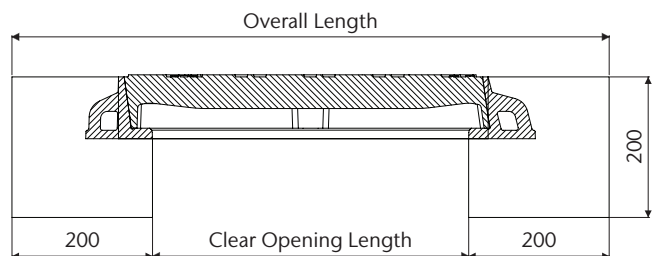
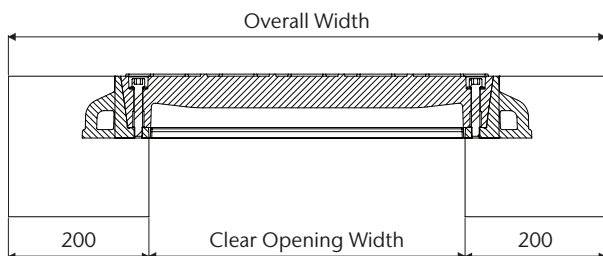
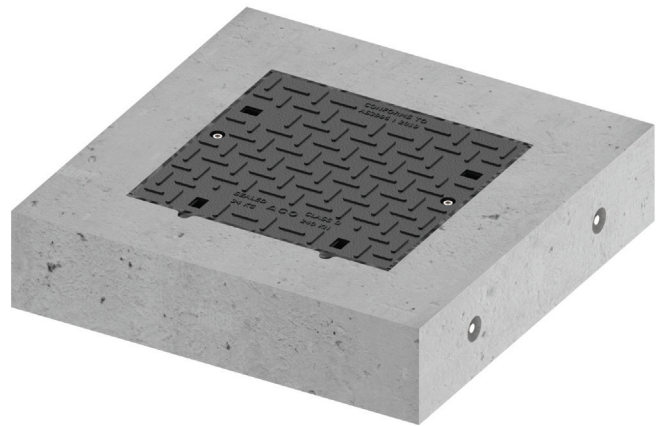


RhinoCast Solid Top Covers


Concrete Encased Frames

Product Description

- RhinoCast solid top covers with T-frames manufactured from ductile iron
- RhinoCast covers meet AS 3996 Load Class D and P5 slip rated to AS 4586
- NATA endorsed test reports available
- Frames encased in reinforced concrete
- Precast reinforced concrete collar certified by engineer to AS/NZS 1170, AS 3600 and AS 3996
- 200 x 200 mm reinforced concrete collar
- 40 MPa concrete strength with 40mm cover
- Four lifting eyes



Parts list

Type	Part No.	Clear Opening W x L (mm)	Overall W x L (mm)	Overall Depth (mm)	Cover Wgt (kg)	Overall Wgt (kg)*	Locking Option**
 Class D - AS 3996 - 240kN							
DIS44D-CE	143324	450 x 450	850 x 850	200	35	276	SL/SB
DIS66D-CE	143325	600 x 600	1000 x 1000	200	57	353	SL/SB
DIS99D-CE	143326	900 x 900	1300 x 1300	200	120	525	SL/SB

* Approximate lifting weight includes cover/frame and concrete collar

** Bolts are standard for each cover, specify Standard Locking bolts (SL) or security rated Security Bolts (SB) after part no.

If structural bolts are required, contact ACO